

APPENDIX B



WELCOME

A Citizen's Guide to Understanding Stormwater: When It Rains It Drains



[Read More](#)

[Stormwater Ordinance 509](#)

City of Satsuma is "Smoke Free"

The city council passed the smoking ordinance on July 2. The new ordinance can be found here: [Ordinance 507](#)

Public Safety Notice

To ensure the safety of all children and residents, golf carts, four wheelers and electric scooters do NOT meet the definition of a vehicle and may NOT be used on public streets. Individuals violating this statute may be ticketed and/or vehicle impounded. If you have any questions, please contact Satsuma Police Department at 251-675-0151. For further information, see the [attached Attorney General Opinion](#).

Steele Creek Lodge



Pictures, information and rental application

[Read More](#)



The City Trash Ramp is also open for your convenience on each Wednesday and Saturday from 7:30 A.M. to 3:00 P.M.

[Read More](#)

NEWS

No Burn Ordinance

[Click here to view ORDINANCE NO. 512 OUTDOOR AND OPEN BURNING ORDINANCE FOR THE CITY OF SATSUMA](#)

OffenderWatch Information

Satsuma's law enforcement utilizes OffenderWatch® to manage and monitor the whereabouts, conduct and compliance status of the registered sex offenders in Satsuma. OffenderWatch® provides the most accurate and timely information available and now this information is available to you!

[Read More](#)

Plaques for D. C. Baldwin Square

Information, requirements and a form for plaques

[Read More](#)

Pay Tickets Online

Court Meets on the 2nd and 4th Thursday of every month at 4:00 p.m. Pay tickets here or call 662-5306 to pay over the phone using Visa or MasterCard, Credit and Debit.

[Pay Here](#)

Fire Department Needs Volunteers

Volunteer to be a firefighter in Satsuma

[Read More](#)

Community Watch in Satsuma

Anyone interested in Community Watch contact the police department at 251-675-0151.

Satsuma Community Development Organization

- [Facebook Page](#)
- [Citizen of the Year 2014 Information & nomination form](#)

Library Events

- Teen Friends Tutoring Program
- Computer class for adults

[Read More](#)

On The Spot Vet Car
On-Site Veterinarian - Dr. Cattle Beers



Pet Health Care Fair
Sponsored by the Satsuma Police Department

✓ Rabies shots - \$10	✓ Microchip - \$5
✓ Heartworm - \$13.50	✓ Full Set Vaccines

Spay/Neuter and Dental services are also available - time for on-site appointment. Dr. Cattle Beers (251) 675-0151



Location: Satsuma City Hall-5464
Date/Time: Saturday, April 25, 2015 8am - 12pm
Contact: Satsuma Animal Control Officer - Sarah M. Little

Helping animals, one paw at a time. We are here to help you help your pet.

[click image to enlarge](#)

Pet Health Care Fair

Saturday, April 25, 2015
8 am - 4 pm
Satsuma City Hall

ANIMAL CONTROL

Please be respectful of your neighbors by obeying the law. Please be reminded that dogs and cats at large is a violation of Ordinance 37 ([see more info](#)).



Satsuma Lions Club

Meetings are the 3rd Monday of Month
Time: 7:00 pm
Location: Satsuma Community Center
Juniper Ave.



Satsuma Community Center

[Read More](#)



A Citizen's Guide to Understanding Stormwater



EPA 833-B-03-002
January 2003
EPA
United States Environmental Protection Agency

Small text at the top right corner of the page.



After the Storm

For more information contact:
Contact name
Contact agency
Address
Address 1
Phone number
E-mail address
or visit
www.epa.gov/nps/stormwater
or visit
www.epa.gov/nps



What is stormwater runoff?



Stormwater runoff occurs when precipitation from rain or snowmelt flows over the ground. Impervious surfaces like driveways, sidewalks, and streets prevent stormwater from naturally soaking into the ground.

Why is stormwater runoff a problem?



Stormwater can pick up debris, chemicals, dirt, and other pollutants and flow into a storm sewer system or directly to a lake, stream, river, wetland, or coastal water. Anything that enters a storm sewer system is discharged untreated into the waterbodies we use for swimming, fishing, and providing drinking water.

The effects of pollution

Polluted stormwater runoff can have many adverse effects on plants, fish, animals, and people.



- ◆ Sediment can cloud the water and make it difficult or impossible for aquatic plants to grow. Sediment also can destroy aquatic habitats.
- ◆ Excess nutrients can cause algae blooms. When algae die, they sink to the bottom and decompose in a process that removes oxygen from the water. Fish and other aquatic organisms can't exist in water with low dissolved oxygen levels.
- ◆ Bacteria and other pathogens can wash into swimming areas and create health hazards, often making beach closures necessary.
- ◆ Debris—plastic bags, six-pack rings, bottles, and cigarette butts—washed into waterbodies can choke, suffocate, or disable aquatic life like ducks, fish, turtles, and birds.
- ◆ Household hazardous wastes like insecticides, pesticides, paint, solvents, used motor oil, and other auto fluids can poison aquatic life. Land animals and people can become sick or die from eating diseased fish and shellfish or ingesting polluted water.



◆ Polluted stormwater often affects drinking water sources. This, in turn, can affect human health and increase drinking water treatment costs.

Stormwater Pollution Solutions

Residential



Recycle or properly dispose of household products that contain chemicals, such as insecticides, pesticides, paint, solvents, and used motor oil and other auto fluids. Don't pour them onto the ground or into storm drains.

Lawn care

Excess fertilizers and pesticides applied to lawns and gardens wash off and pollute streams. In addition, yard clippings and leaves can wash into storm drains and contribute nutrients and organic matter to streams.



- ◆ Don't overwater your lawn. Consider using a soaker hose instead of a sprinkler.
- ◆ Use pesticides and fertilizers sparingly. When use is necessary, use these chemicals in the recommended amounts. Use organic mulch or safer pest control methods whenever possible.
- ◆ Compost or mulch yard waste. Don't leave it in the street or sweep it into storm drains or streams.
- ◆ Cover piles of dirt or mulch being used in landscaping projects.

Septic systems

Leaking and poorly maintained septic systems release nutrients and pathogens (bacteria and viruses) that can be picked up by stormwater and discharged into nearby waterbodies. Pathogens can cause public health problems and environmental concerns.



- ◆ Inspect your system every 3 years and pump your tank as necessary (every 3 to 5 years).
- ◆ Don't dispose of household hazardous waste in sinks or toilets.

Auto care

Washing your car and degreasing auto parts at home can send detergents and other contaminants through the storm sewer system. Dumping automotive fluids into storm drains has the same result as dumping the materials directly into a waterbody.



- ◆ Use a commercial car wash that treats or recycles its wastewater, or wash your car on your yard so the water infiltrates into the ground.
- ◆ Repair leaks and dispose of used auto fluids and batteries at designated drop-off or recycling locations.

Pet waste

Pet waste can be a major source of bacteria and excess nutrients in local waters.



- ◆ When walking your pet, remember to pick up the waste and dispose of it properly. Flushing pet waste is the best disposal method. Leaving pet waste on the ground increases public health risks by allowing harmful bacteria and nutrients to wash into the storm drain and eventually into local waterbodies.

Residential landscaping

Permeable Pavement—Traditional concrete and asphalt don't allow water to soak into the ground. Instead these surfaces rely on storm drains to divert unwanted water. Permeable pavement systems allow rain and snowmelt to soak through, decreasing stormwater runoff.

Rain Barrels—You can collect rainwater from rooftops in mosquito-proof containers. The water can be used later on lawn or garden areas.



Rain Gardens and Grassy Swales—Specially designed areas planted with native plants can provide natural places for



rainwater to collect and soak into the ground. Rain from rooftop areas or paved areas can be diverted into these areas rather than into storm drains.

Vegetated Filter Strips—Filter strips are areas of native grass or plants created along roadways or streams. They trap the pollutants stormwater picks up as it flows across driveways and streets.



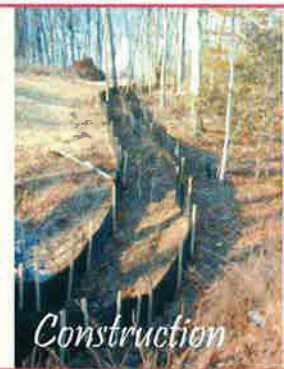
Commercial

Dirt, oil, and debris that collect in parking lots and paved areas can be washed into the storm sewer system and eventually enter local waterbodies.

- ◆ Sweep up litter and debris from sidewalks, driveways and parking lots, especially around storm drains.
- ◆ Cover grease storage and dumpsters and keep them clean to avoid leaks.
- ◆ Report any chemical spill to the local hazardous waste cleanup team. They'll know the best way to keep spills from harming the environment.

Erosion controls that aren't maintained can cause excessive amounts of sediment and debris to be carried into the stormwater system. Construction vehicles can leak fuel, oil, and other harmful fluids that can be picked up by stormwater and deposited into local waterbodies.

- ◆ Divert stormwater away from disturbed or exposed areas of the construction site.
- ◆ Install silt fences, vehicle mud removal areas, vegetative cover, and other sediment and erosion controls and properly maintain them, especially after rainstorms.
- ◆ Prevent soil erosion by minimizing disturbed areas during construction projects, and seed and mulch bare areas as soon as possible.



Construction

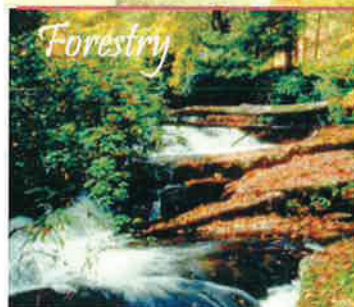


Agriculture

Lack of vegetation on streambanks can lead to erosion. Overgrazed pastures can also contribute excessive amounts of sediment to local waterbodies. Excess fertilizers and pesticides can poison aquatic animals and lead to destructive algae blooms. Livestock in streams can contaminate waterways with bacteria, making them unsafe for human contact.



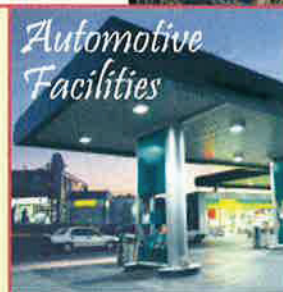
- ◆ Keep livestock away from streambanks and provide them a water source away from waterbodies.
- ◆ Store and apply manure away from waterbodies and in accordance with a nutrient management plan.
- ◆ Vegetate riparian areas along waterways.
- ◆ Rotate animal grazing to prevent soil erosion in fields.
- ◆ Apply fertilizers and pesticides according to label instructions to save money and minimize pollution.



Forestry

Improperly managed logging operations can result in erosion and sedimentation.

- ◆ Conduct preharvest planning to prevent erosion and lower costs.
- ◆ Use logging methods and equipment that minimize soil disturbance.
- ◆ Plan and design skid trails, yard areas, and truck access roads to minimize stream crossings and avoid disturbing the forest floor.
- ◆ Construct stream crossings so that they minimize erosion and physical changes to streams.
- ◆ Expedite revegetation of cleared areas.



Automotive Facilities

Uncovered fueling stations allow spills to be washed into storm drains. Cars waiting to be repaired can leak fuel, oil, and other harmful fluids that can be picked up by stormwater.

- ◆ Clean up spills immediately and properly dispose of cleanup materials.
- ◆ Provide cover over fueling stations and design or retrofit facilities for spill containment.
- ◆ Properly maintain fleet vehicles to prevent oil, gas, and other discharges from being washed into local waterbodies.
- ◆ Install and maintain oil/water separators.



[Home](#) [About](#) [Services](#) [Residents](#) [Photo Gallery](#)

[Business](#) [Government](#) [Recreation](#) [Contact Us](#)

PUBLIC WORKS

James Elmore, Public Works Supervisor

The Public Works Department provides maintenance and upkeep for the City of Satsuma. James and his crew offer many services to the citizens. They maintain the city streets, both paved and dirt, take care of all drainage problems, and sustain the public buildings. They also pick up limbs and leaves from the curbside.

If you have any questions or comments, or need limbs picked up, you can reach the Public Works Department at 251-675-1440. The office is located at 5668 Second Street behind city hall. Hours are 7:30 a.m. to 3:30 p.m.

The City trash ramp collection site will be open on **Wednesdays and Saturdays** from 7:30 to 3:00. Citizens may take any items other than household garbage and hazardous material. If mixed debris is brought, it will need to be separated before being dumped.



James Elmore, Public Works Supervisor





Copyright © City of Satsuma. All rights reserved. Website Design and Hosting by [North Mobile Internet Services, Inc.](#)



WASTE REMOVAL

Please read and print the Garbage Brochure. All of the following information can be found in this brochure. There is also information regarding removal of hazardous materials such as tires, paint cans, motor oil, etc.

Holiday Schedule

THE ONLY DAYS THAT GARBAGE SERVICE **WILL NOT RUN** ARE THANKSGIVING DAY, CHRISTMAS, AND NEW YEARS.

Garbage Service Procedures:

Containers must be on the street adjoining your property by 6:30 A.M. on your day of collection and placed at least 3 feet from any other object. If you have more than one cart, they should be placed 3 feet apart. Containers may be set out after 5:00 P.M. before the scheduled collections, and must be removed by midnight the day of collection. At all other times the cart must be on the side or rear of your residence.

Handles & cart wheels facing the house

No Hazard Material will be picked up.

All trash must be fully contained in the cart with the lid closed securely. Do not stack anything on top of cart. This includes bulky items of trash on the street.

To make sure we can collect your container, place away from vehicles, poles, mailboxes and other obstructions.

Trash Collection Procedures:

Trash Collection will be weekly. Call 251-679-3182 for pickup. If the driver is unable to run the complete route, the collection will be extended another day.

All loose trash must be containerized. Due to the use of a knuckle boom truck, the city will not be able to pick up items that are not containerized.

Refrigerators put out for pick up must be tagged by a licensed refrigeration service showing that the Freon has been properly disposed.

Contractor waste (including Tree Removal, Construction Debris-including carpet, padding, tile, etc.) may NOT be picked up. The removal of the debris should be included in their cost and executed by that contractor.

Bulk Waste must be placed separately from yard waste as they are taken to different locations. Yard waste must include limbs, leaves, and large trees and stumps. (Bulk Waste includes furniture, boxes, TV's, etc.)

The City Trash Ramp is also open for your convenience on each Wednesday and Saturday from 7:30 A.M. to 5:00 P.M. Any trash collection (excluding hazardous material and household garbage) can be taken to the trash ramp located on Catherine Street.

Trash Ramp open to Satsuma Residents Only


TRASH RAMP REQUIREMENTS - VALID DRIVER'S LICENSE, NAME, ADDRESS, MUST SIGN IN BEFORE DUMPING. IF YOU HAVE ANY QUESTIONS CONCERNING THE TRASH RAMP YOU MAY CALL 251-679-3182 OR BRIDGE STREET AT 251-331-1514.

Directions to Trash Ramp:

Turn off of Highway 43 by the car wash (Oak Avenue), follow Oak Avenue to the fourth street on the right (Catherine Street). The trash ramp will be on your left hand side a short way up Catherine Street. Turn onto a gravel drive and enter the location. Please contact the Public Works Call Center at 251-679-3182 for more information.

Leaf Collection Procedures:

Leaves must be bagged from March 1st to October 31st.

Leaf pick up is done with the leaf vacuum. 

Leaves must be raked on to the edge of the right of way and not in the street and must be piled up. They can also be placed in a trash cart. Leaf piles cannot be placed over drains or in the ditch.

Leaves must be a minimum of (5) feet away from any fire hydrant, mailbox, electrical boxes or light pole.

Leaf piles containing brush, garden or yard waste will NOT be picked up.

Leaf piles with vehicles parked in front of them will NOT be picked up.

Grass clippings and pine straw must be bagged. The City encourages to compost or mulch leaves and grass clippings at home for a healthier landscape.

Please contact the Public Works Call Center at 251-679-3182 or 251-331-1514 when you have loose leaf piles, clippings, or bagged pine straw so that your address can be placed on a pick up list.

Alternative Disposal Information

Motor Oil- Contact your local Walmart Service Center (Saraland – 251-675-8000) to dispose of motor oil up to 10 gallons.

Vehicle Batteries – contact your local automotive parts store.

Household Hazardous Waste & Paint – contact Public Works Call Center at 251-679-3182 or 331-1514 for instructions on disposal of hazardous waste. If a paint can has dried paint, the city will allow the paint can to be disposed in your garbage.

Tires – contact your local tire store.

Rocks & Dirt – can be taken to the trash ramp.



[Home](#) [About](#) [Services](#) [Residents](#) [Photo Gallery](#)

[Business](#) [Government](#) [Recreation](#) [Contact Us](#)

UTILITIES

Satsuma Water Board 251-875-1257 [website](#)

Mobile Gas 251-476-8052 [website](#)

Alabama Power 1-800-245-2244 [website](#)



Make your home The Solution to Stormwater Pollution

A Homeowner's Guide to Healthy Habits for
Clean Water

[Read More](#)

GARBAGE RATE CHANGE

With the adoption of Ordinance 325-1, the rate for collection, hauling and disposal of garbage, rubbish and trash will increase as follows: **Residential Customers:** \$20.50 a month (additional carts to \$10.25 per month) **Commercial Customers:** \$31.00 month (additional Carts will increase to \$14.50). The increase is effective October 1, 2013 and will be reflected on your November bill

Make your home

The SOLUTION TO STORMWATER POLLUTION!

A homeowner's guide to healthy habits for clean water

As stormwater flows over driveways, lawns, and sidewalks, it picks up debris, chemicals, dirt, and other pollutants. Stormwater can flow into a storm sewer system or directly to a lake, stream, river, wetland, or coastal water. Anything that enters a storm sewer system is discharged untreated into the waterbodies we use for swimming, fishing, and providing drinking water. Polluted runoff is the nation's greatest threat to clean water. By practicing healthy household habits, homeowners can keep common pollutants like pesticides, pet waste, grass clippings, and automotive fluids off the ground and out of stormwater. Adopt these healthy household habits and help protect lakes, streams, rivers, wetlands, and coastal waters. Remember to share the habits with your neighbors!

Healthy Household Habits for Clean Water

Vehicle and Garage

- Use a commercial car wash or wash your car on a lawn or other unpaved surface to **minimize** the amount of dirty, soapy water flowing into the storm drain and eventually into your local waterbody.
- Check your car, boat, motorcycle, and other machinery and equipment for leaks and spills. Make repairs as soon as possible. Clean up **spilled fluids** with an absorbent material like kitty litter or sand, and don't rinse the spills into a nearby storm drain. Remember to properly dispose of the absorbent material.
- **Recycle** used oil and other automotive fluids at participating service stations. Don't dump these chemicals down the storm drain or dispose of them in your trash.

Lawn and Garden

- Use pesticides and fertilizers **sparingly**. When use is necessary, use these chemicals in the recommended amounts. Avoid application if the forecast calls for rain; otherwise, chemicals will be washed into your local stream.
- Select **native** plants and grasses that are drought- and pest resistant. Native plants require less water, fertilizer, and pesticides.
- **Sweep up** yard debris, rather than hosing down areas. Compost or recycle yard waste when possible.
- Don't over water your lawn. Water during the **cool** times of the day, and don't let water run off into the storm drain.
- Cover piles of dirt and mulch being used in landscaping projects to prevent these pollutants from blowing or washing off your yard and into local waterbodies. **Vegetate** bare spots in your yard to prevent soil erosion.

Home Repair and Improvement

- Before beginning an outdoor project, locate the nearest storm drains and **protect** them from debris and other materials.
- **Sweep up** and properly dispose of construction debris such as concrete and mortar.
- Use hazardous substances like paints, solvents, and cleaners in the **smallest amounts possible**, and follow the directions on the label. Clean up spills **immediately**, and dispose of the waste safely. Store substances properly to avoid leaks and spills.
- Purchase and use **nontoxic, biodegradable, recycled, and recyclable** products whenever possible.

Make your home
The SOLUTION TO STORMWATER POLLUTION!

A homeowner's guide to healthy habits for clean water

- **Clean** paint brushes in a sink, not outdoors. Filter and reuse paint thinner when using oil-based paints. Properly dispose of excess paints through a household hazardous waste collection program, or donate unused paint to local organizations.

- **Reduce** the amount of paved area and increase the amount of vegetated area in your yard. Use native plants in your landscaping to reduce the need for watering during dry periods. Consider directing downspouts away from paved surfaces onto lawns and other measures to increase infiltration and reduce polluted runoff.

Pet Care

- When walking your pet, remember to **pick up** the waste and dispose of it properly. Flushing pet waste is the best disposal method. Leaving pet waste on the ground increases public health risks by allowing harmful bacteria and nutrients to wash into the storm drain and eventually into local waterbodies.

Swimming Pool and Spa

- **Drain** your swimming pool only when a test kit does not detect chlorine levels.

- Whenever possible, drain your pool or spa into the **sanitary** sewer system.

- Properly store pool and spa chemicals to **prevent** leaks and spills, preferably in a covered area to avoid exposure to stormwater.

Septic System Use and Maintenance

- Have your septic system **inspected** by a professional at least every 3 years, and have the septic tank **pumped** as necessary (usually every 3 to 5 years).

- Care for the septic system drainfield by **not** driving or parking vehicles on it. Plant only grass over and near the drainfield to avoid damage from roots.

- Flush responsibly. Flushing household chemicals like paint, pesticides, oil, and antifreeze can **destroy** the biological treatment taking place in the system. Other items, such as diapers, paper towels, and cat litter, can **clog** the septic system and potentially damage components.

Storm drains connect to waterbodies!

For more information, visit
www.epa.gov/npdes/stormwater
or
www.epa.gov/nps



SATSUMA WATER AND SEWER

BOARD MEMBERS:

PAUL J. MURRAY, CHAIRMAN
 MATT DIAL, VICE-CHAIRMAN
 JEFF HARDEGREE, SECRETARY/TREASURER
 PRATT MONK
 BILL BLACK
 BILLY JOE MCCRORY, JR., DIRECTOR

ADDRESS:

P.O. Box 559
 5502 OLD HIGHWAY 43
 SATSUMA, ALABAMA 36572-9559
 PHONE: (251) 675-1257
 FAX: (251) 675-1807

NEW CUSTOMER INFORMATION

WATER BILLS ARE MAILED ON THE 1ST OF EACH MONTH AND ARE DUE UPON RECEIPT. A 10% LATE FEE IS ADDED ON THE 16TH AND CUT OFF IS ON THE 21ST. FAILURE TO RECEIVE YOUR BILL FROM THE POST OFFICE DOES NOT RELIEVE YOU OF YOUR PAYMENT OBLIGATION.

THERE IS A VOLUNTARY \$1.00 FIRE DONATION FEE INCLUDED ON THE WATER BILL UNLESS YOU CHOOSE TO DEDUCT FROM PAYMENT.

A GARBAGE FEE OF \$20.50 A MONTH IS INCLUDED ON YOUR WATER BILL. ANY QUESTIONS OR COMPLAINTS PERTAINING TO GARBAGE CALL CITY HALL AT 679-3182 or 331-1514.

GARBAGE PICK UP IS TWICE A WEEK.

SCHEDULE: WEST SIDE OF HIGHWAY 43	TUESDAY/FRIDAY
EAST SIDE SOUTH OF ORANGE AVE	TUESDAY/FRIDAY
EAST SIDE NORTH OF ORANGE AVE	MONDAY/THUR

LEAF/LIMB- PICK UP SERVICE CURB SIDE - 679-3182 FOR SCHEDULE

MEDIACOM OFFICE IS LOCATED AT 5807 A HWY 43 NORTH

ALABAMA POWER IS LOCATED AT 1100 INDUSTRIAL PKWY, SARALAND

MOBILE GAS IS LOCATED AT 2828 DAUPHIN ST, MOBILE

BREAK LEAK ADJUSTMENT POLICY: A ONE TIME CREDIT WILL BE ALLOWED WITHIN A 12 MONTH PERIOD IF THE CUSTOMER CAN DEMONSTRATE THAT THE EXCESSIVE WATER DID NOT ENTER THE SEWER SYSTEM. WE CAN NOT ADJUST WATER USAGE; WE CAN ONLY ADJUST THE SEWER USAGE OF YOUR BILL. THE CUSTOMER MUST REQUEST ABATEMENT IN WRITING WITHIN 60 DAYS OF THE DATE OF THE EXCESSIVE BILL. YOU MUST PROVIDE A RECEIPT OF REPAIRS OR PARTS USED TO BE CONSIDERED FOR A LEAK ADJUSTMENT SEWER CREDIT.

